

# Troubleshooting Tools - curl

## Installing curl on Mac

curl is installed by default on all MacOS X installations. Open the "terminal" application to use it

## Installing curl on Linux

Use your distribution package manager to install curl. See your distribution documentation for details.

## Installing curl (or equivalent package) on Windows

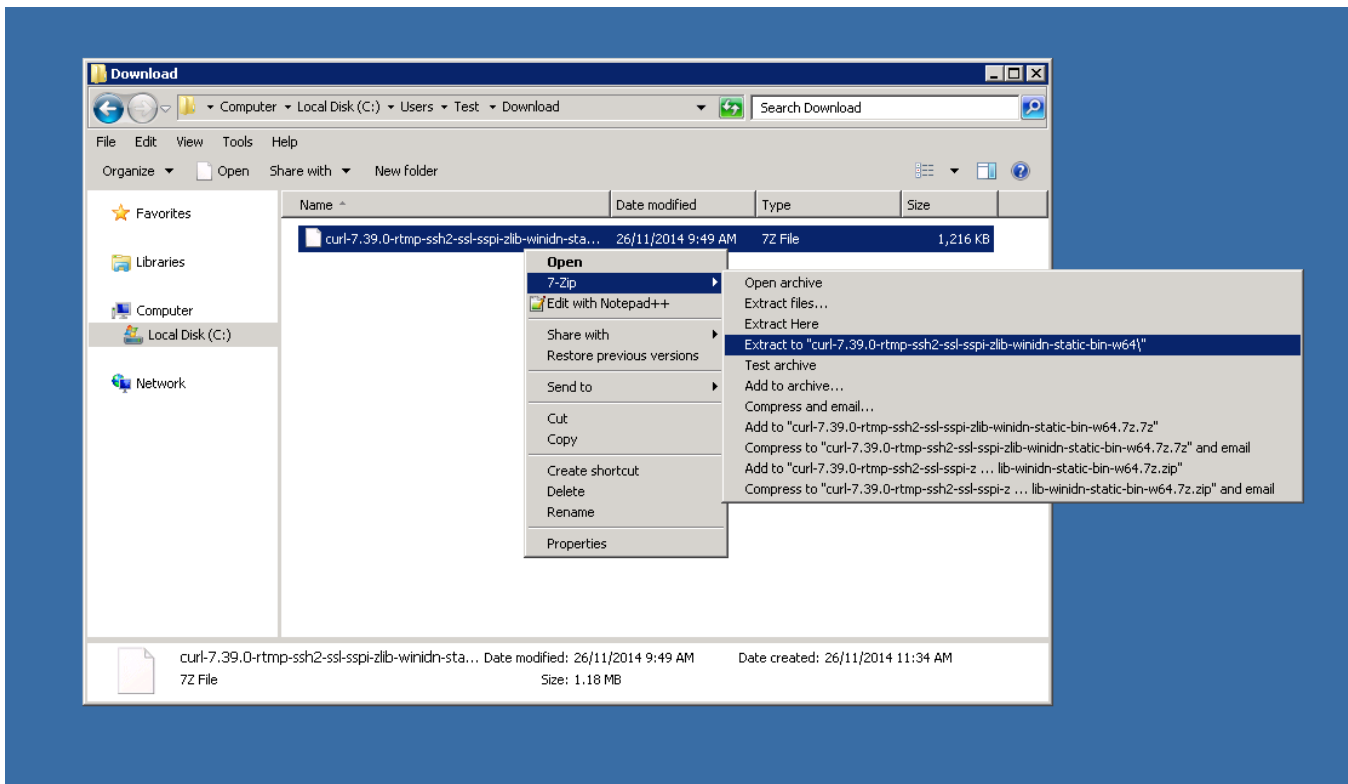
Download and install the curl package based on your environment:

x64: <http://curl.haxx.se/dlwiz/?type=bin&os=Win64&flav=MinGW64>

x86: <http://curl.haxx.se/dlwiz/?type=bin&os=Win32&flav=-&ver=2000%2FXP> and select either of the **curl version: 7.39.0 - SSL enabled SSH enabled packages**

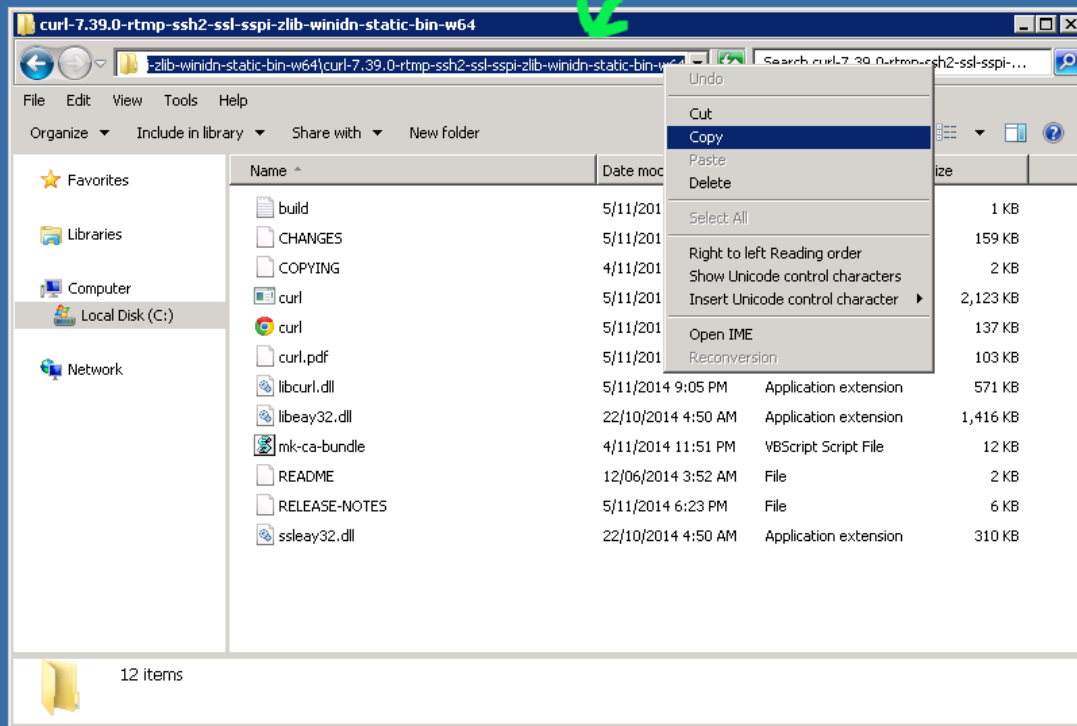
Once downloaded:

1. Unzip the package like so:

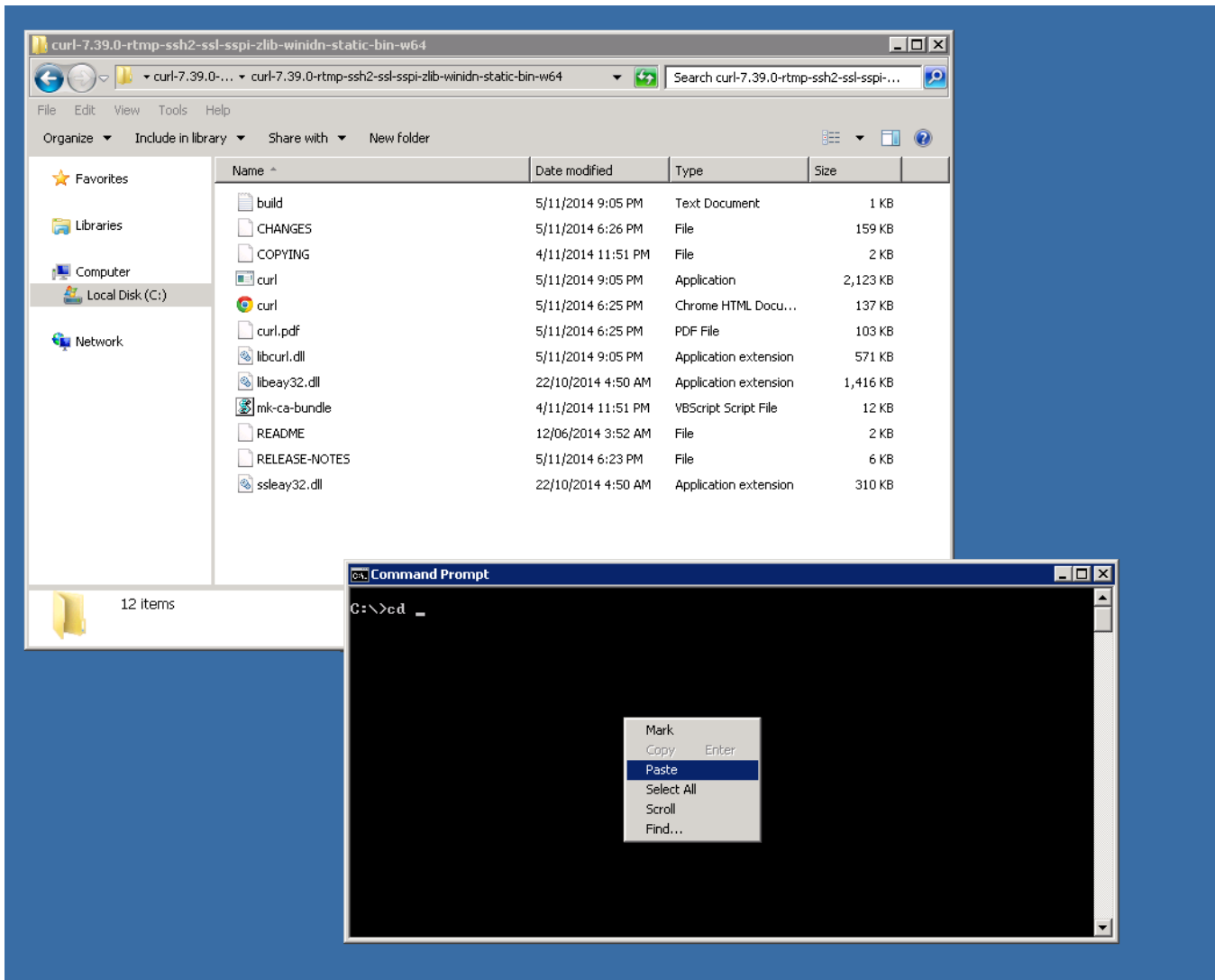


2. Copy the path of the folder to where the 'curl.exe' is in:

Select the path and Copy it



3. Open a cmd prompt. Start -> Programs -> Accessories -> cmd (or command prompt). Then change to that directory to the folder where the 'curl.exe' is found. Enter 'cd' (without quotes) and then paste in the path from step 2.



4. Once in the folder enter 'curl --version' (without quotes) and ensure you get a valid version

Command Prompt

```
C:\Users\test\Download\curl-7.39.0-rtmp-ssh2-ssl-sspi-zlib-winidn-static-bin-w64\curl-7.39.0-rtmp-ssh2-ssl-sspi-zlib-winidn-static-bin-w64>curl --version
curl 7.39.0 (x86_64-pc-win32) libcurl/7.39.0 OpenSSL/1.0.0o zlib/1.2.8 WinIDN libssh2/1.4.3 librtmp/2.3
Protocols: dict file ftp ftps gopher http https imap imaps ldap pop3 pop3s rtmp
rtsp scp sftp smtp smtps telnet tftp
Features: AsynchDNS IDN Largefile SSPI SPNEGO NTLM SSL libz
```